



**CITY OF ROGERS
FIRE DEPARTMENT
MONTHLY REPORT November 2013**



**During this month, the Rogers Fire Department
483 incidents.**

**Average training hours per firefighter: 29
Fire loss per capita for this month: \$ 2.67**

Incident Type	2013 Nov	2013 YTD	% of Total (Month)
Structure Fires	8	79	2%
Vehicle Fires	3	32	1%
Fire, Other	3	77	1%
Overpressure	1	9	0%
Medical Emergencies	311	3640	64%
Vehicle Accidents	38	433	8%
Rescue Calls	3	42	1%
Hazardous Condition	3	57	1%
Hazardous Materials	6	86	1%
Service Calls	17	282	4%
Good Intent Calls	39	393	8%
False Alarms	51	437	11%
Other Incident Type	0	3	0%

Fire Incident Casualty Type	2013 November	2013 YTD
Civilian Injury	1	3
Civilian Death	0	0
Firefighter Injury	0	3
Firefighter Death	0	0

Incidents by Fire Station	2013 Nov	2013 YTD
Station 1, North 1st Street	130	1412
Station 2, South 17th Street	61	917
Station 3, Airport	44	333
Station 4, West Olive Street	117	1508
Station 5, Pinnacle Hills Parkway	63	724
Station 6, South Bellview Road	26	288
Station 7, South 1st Street	42	406

Fire Loss Data	2013 Nov	2013 YTD	% of Total (Month)
Property Value	\$ 1,699,000	\$ 27,538,304	N/A
Property Destroyed	\$ 157,610	\$ 1,726,096	9%
Property Saved	\$ 1,541,390	\$ 25,812,208	91%

Fractile Response Performance (% Compliant)	2013 November	2013 YTD
Dispatch Time	90 seconds	77.30% / 72.80%
Turnout Time	60 seconds	85.90% / 83.00%
Travel Time	240 seconds	65.70% / 66.50%

Miscellaneous Attributes	2013 Nov	2013 YTD	% of Total ¹
Multi-Alarm Incidents	0	6	0%
Simultaneous Inc's	157	1446	33%

Budget Cost Center	2013 November	2013 YTD	% Expended
HR Expenditures	\$928,301	\$6,676,535	91%
O&M Expenditures	\$59,444	\$876,180	97%

¹Multi-Alarm fires of total structure fires & Simultaneous incidents of monthly total

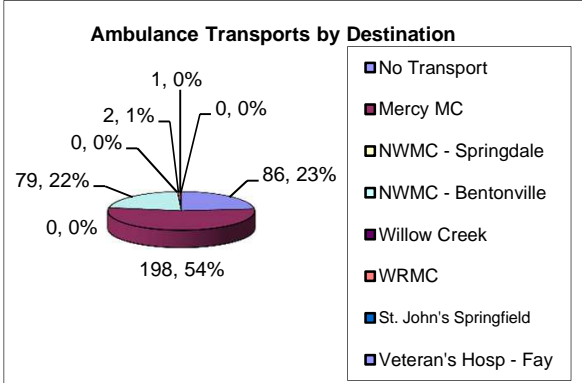
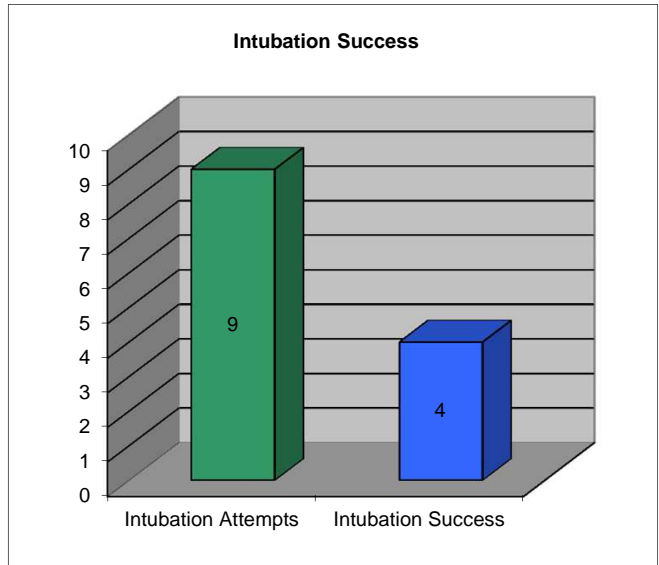
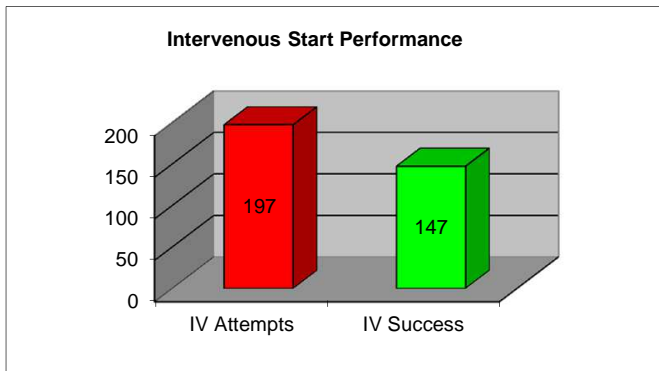
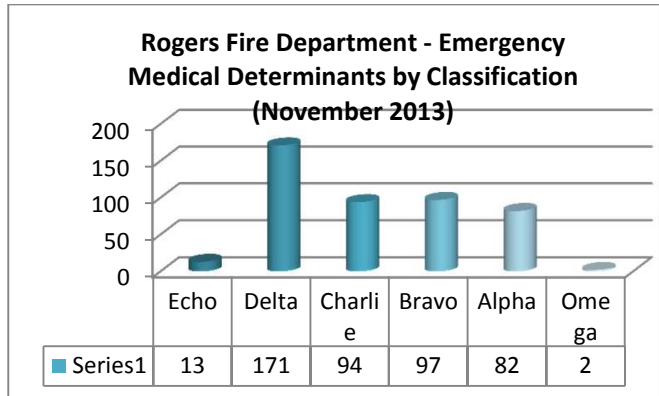
Fire Prevention Summary	2013 Nov	2013 YTD
Fire Inspections	42	1166
Plan Reviews	16	115
Notice of Violation Issued	1	22
Citations Issued	0	0
Public Education Events	4	83
a. Adults in Attendance	30	2169
b. Children in Attendance	57	12910
Smoke Alarms Installed	35	176

Professional Development Summary	Hours	Attendees
Administrative / Organization	201	84
Apparatus Operations	536.5	573
Aircraft Rescue and Fire	6	9
Emergency Medical CEU	718.75	134
Fire Suppression and Tactics	1184.5	354
Hazardous Materials	0	0
Technical / Specialized Rescue	132	49
Officer Development	253.5	102

Department Aid Summary	2013 Nov	2013 YTD
Mutual Aid Given	12	33
Mutual Aid Received	1	12

Leave Summary	A Platoon	B Platoon	C Platoon
Sick Leave Hours	308	324	328
Overtime Hours	443	305.75	534

Medical Chief Complaints	2013 Nov	2013 YTD	% of Total
Abdominal Pain	21	268	7%
Airway Obstruction	4	24	1%
Allergic Reaction	6	25	2%
Altered LOC	30	272	9%
Behavioral Disorder	24	368	8%
Cardiac Arrest	4	51	1%
Cardiac Problems	5	84	2%
Chest Pain	29	336	9%
Diabetic Symptoms	10	120	3%
Electrocution	0	2	0%
Hyperthermia	1	10	0%
Hypothermia	0	1	0%
Hypovolemia	3	36	1%
Inhalation, Toxic Gas	1	2	0%
Obvious Death	1	18	0%
Poisoning	7	107	2%
Pregnancy / Birth	2	19	1%
Respiratory Distress	32	280	10%
Respiratory Arrest	0	5	0%
Seizure	12	190	4%
Sexual Assault	0	1	0%
Stings / Bites	0	6	0%
Smoke Inhalation	1	3	0%
Stroke / CVA	6	74	2%
Syncope	13	111	4%
Traumatic Injury	108	1233	34%
Vaginal Injury	0	7	0%
Not Known	0	290	0%
Not Applicable	0	2	0%
Not Available	0	0	0%



Workers Compensation Summary	2013 Nov	2013 YTD
1 - Back injury, 1 - Exposure, 1 - Shoulder injury	3	29