



# CITY OF ROGERS FIRE DEPARTMENT MONTHLY REPORT November 2012



**During this month, the Rogers Fire Department responded to a total of **459** incidents.**

**Average training hours per firefighter: 35**  
**Fire loss per capita for this month: \$ 0.65**

Incident Type	2012 Nov	2012 YTD	% of Total (Month)
Structure Fires	9	83	2%
Vehicle Fires	6	36	1%
Fire, Other	16	150	3%
Overpressure	2	6	0%
Medical Emergencies	307	3506	67%
Vehicle Accidents	23	418	5%
Rescue Calls	1	18	0%
Hazardous Condition	1	46	0%
Hazardous Materials	9	85	2%
Service Calls	30	369	7%
Good Intent Calls	25	363	5%
False Alarms	30	443	7%
Other Incident Type	0	7	0%

Fire Incident Casualty Type	2012 Nov	2012 YTD
Civilian Injury	0	8
Civilian Death	0	1
Firefighter Injury	0	2
Firefighter Death	0	0

Incidents by Fire Station	2012 Nov	2012 YTD
Station 1, North 1st Street	121	1433
Station 2, South 17th Street	80	983
Station 3, Airport	21	297
Station 4, West Olive Street	124	1463
Station 5, Pinnacle Hills Parkway	57	691
Station 6, South Bellview Road	18	259
Station 7, South 1st Street	38	203

Fire Loss Data	2012 Nov	2012 YTD	% of Total (Month)
Property Value	\$1,341,854	\$22,394,801	N/A
Property Destroyed	\$ 38,486	\$ 1,288,587	3%
Property Saved	\$1,303,368	\$21,106,214	97%

Fractile Response Performance (% Compliant)	2012 Nov	2012 YTD
Dispatch Time	90 seconds	74.10% / 56.40%
Turnout Time	60 seconds	81.60% / 77.80%
Travel Time	240 seconds	66.50% / 65.70%

Miscellaneous Attributes	2012 Nov	2012 YTD	% of Total <sup>1</sup>
Multi-Alarm Incidents	1	4	5%
Simultaneous Inc's	118	1351	26%

<sup>1</sup>Multi-Alarm fires of total structure fires & Simultaneous incidents of monthly total

Budget Cost Center	2012 Nov	2012 YTD	% Expended
HR Expenditures	\$866,598	\$6,243,106	90%
O&M Expenditures	\$52,666	\$1,062,180	95%

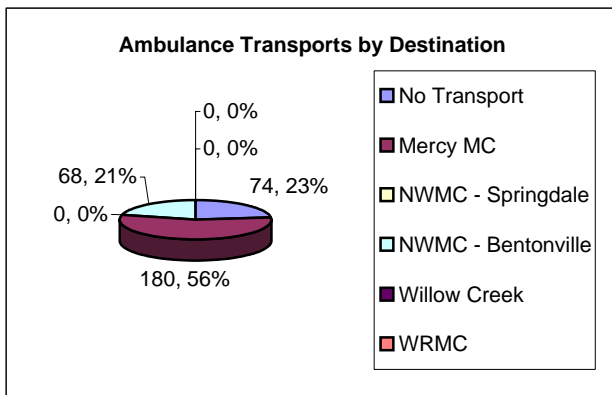
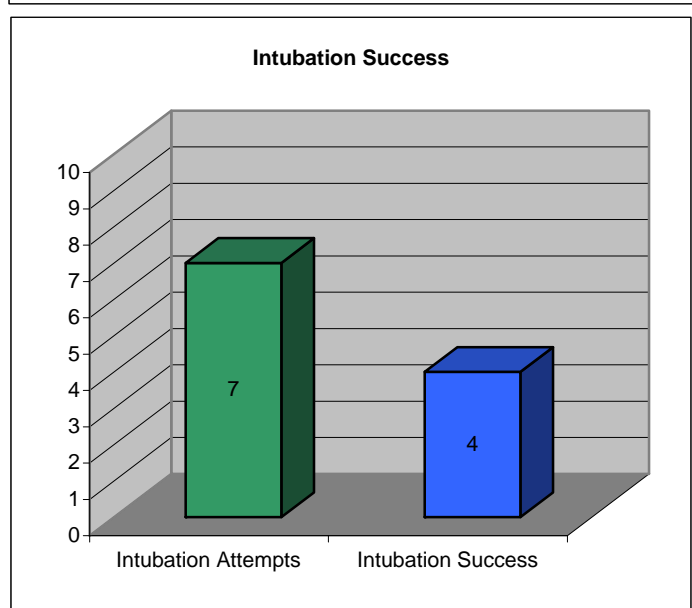
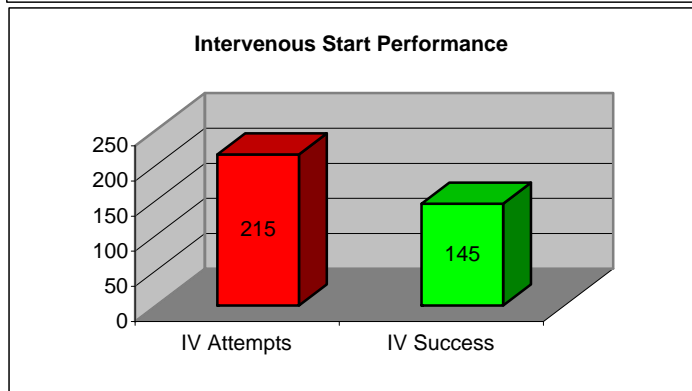
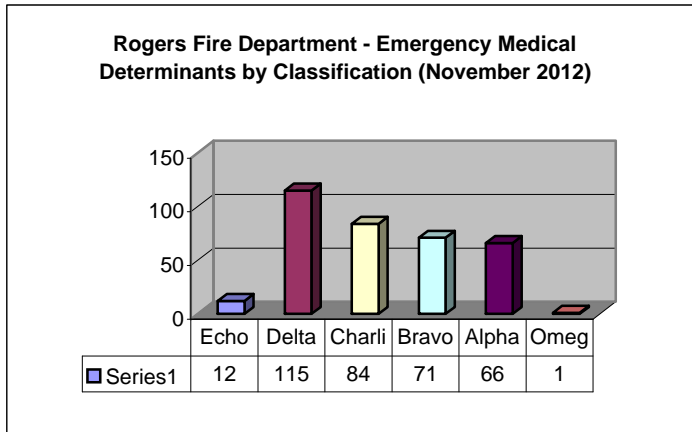
Fire Prevention Summary	2012 Nov	2012 YTD
Fire Inspections	133	1578
Plan Reviews	6	103
Notice of Violation Issued	0	0
Citations Issued	0	2
Public Education Events	1	108
a. Adults in Attendance	100	9064
b. Children in Attendance	100	7730
Smoke Alarms Installed	6	197

Professional Development Summary	Hours	Attendees
Administrative / Organization	104	54
Apparatus Operations	510.53	396
Aircraft Rescue and Fire	17.5	12
Emergency Medical CEU	498.5	130
Fire Suppression and Tactics	1193.25	286
National Fire Academy	0	0
HazMat and Technical Rescue	860.5	181
Officer Development	450	95

Department Aid Summary	2012 Nov	2012 YTD
Mutual Aid Given	4	30
Mutual Aid Received	0	3

Leave Summary	A Platoon	B Platoon	C Platoon
Sick Leave Hours	260	296	296
Overtime Hours	548.25	355.75	1078

Medical Chief Complaints	2012 Nov	2012 YTD	% of Total
Abdominal Pain	29	227	10%
Airway Obstruction	1	19	0%
Allergic Reaction	2	14	1%
Altered LOC	23	255	8%
Behavioral Disorder	29	335	10%
Cardiac Arrest	8	62	3%
Cardiac Problems	6	64	2%
Chest Pain	35	339	11%
Diabetic Symptoms	7	107	2%
Hyperthermia	0	33	0%
Hypothermia	0	0	0%
Hypovolemia	1	30	0%
Inhalation, Toxic Gas	0	0	0%
Obvious Death	3	25	1%
Poisoning	12	127	4%
Pregnancy / Birth	1	12	0%
Respiratory Distress	25	279	8%
Respiratory Arrest	0	2	0%
Seizure	19	210	6%
Sexual Assault	0	0	0%
Stings / Bites	0	8	0%
Smoke Inhalation	0	0	0%
Stroke / CVA	2	82	1%
Syncope	19	192	6%
Traumatic Injury	39	965	13%
Vaginal Injury	0	5	0%
Not Known	44	413	14%
Not Applicable	0	16	0%
Not Available	0	35	0%



Workers Compensation Summary	2012 Nov	2012 YTD
2 - Back Injury and Fluid Exposure	2	20