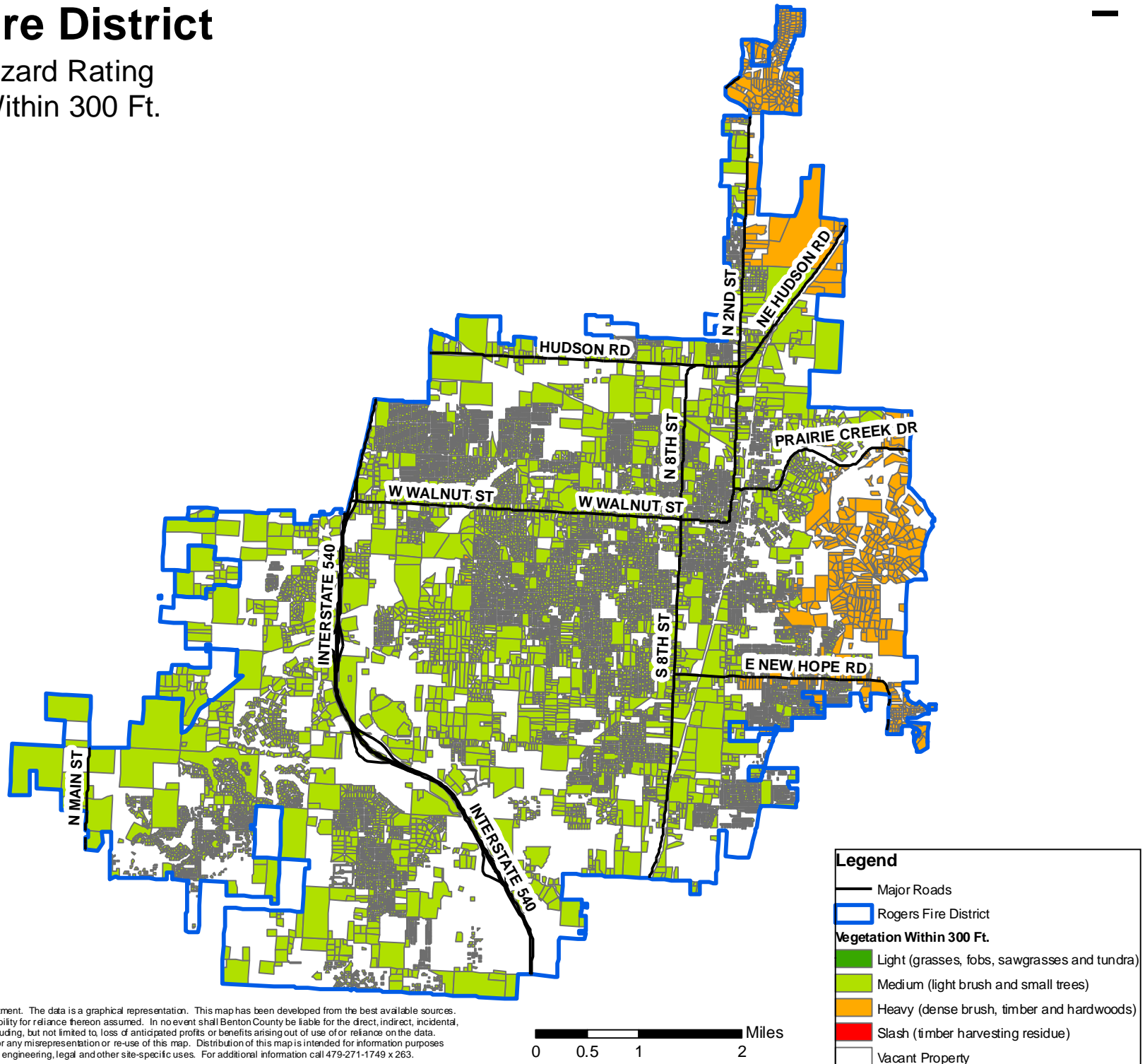


# Rogers Fire District

Fire Risk Hazard Rating  
Vegetation Within 300 Ft.



This map was created by the Benton County GIS Department. The data is a graphical representation. This map has been developed from the best available sources. No guarantee of accuracy is granted, nor is any responsibility for reliance thereon assumed. In no event shall Benton County be liable for the direct, indirect, incidental, consequential or special damages of any kind, including, but not limited to, loss of anticipated profits or benefits arising out of use of or reliance on the data. Benton County is in no way responsible for or liable for any misrepresentation or re-use of this map. Distribution of this map is intended for information purposes and should not be considered authoritative for engineering, legal and other site-specific uses. For additional information call 479-271-1749 x 263.

0 0.5 1 2 Miles

**Legend**

- Major Roads
- Rogers Fire District
- Vegetation Within 300 Ft.**
- Light (grasses, fobs, sawgrasses and tundra)
- Medium (light brush and small trees)
- Heavy (dense brush, timber and hardwoods)
- Slash (timber harvesting residue)
- Vacant Property